

Michelle's Quilting Template #4

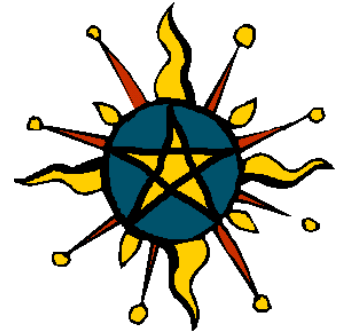
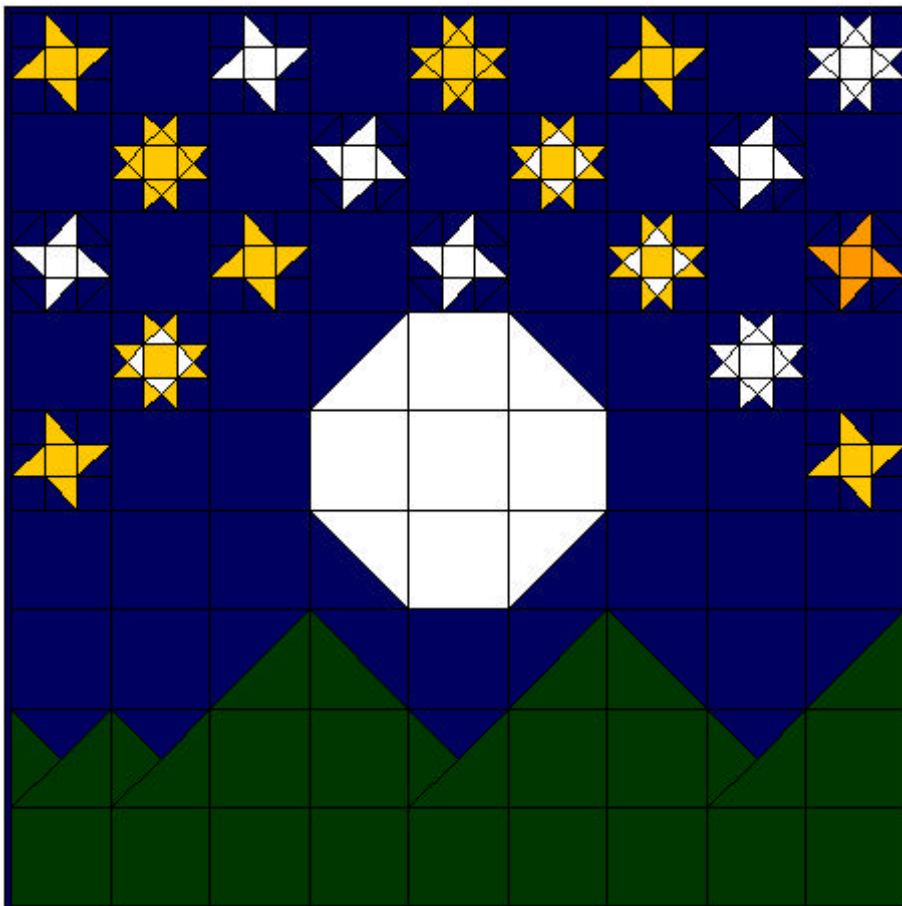
Starry, Starry Night Wallhanging

This quilt was inspired by all those block swaps that we have all been in. Stars and celestial fabrics and designs have always been a popular theme for block and fabric swaps. Once you've been in a few of these swaps, you end up with quite a few blocks.

The idea for this quilt/wallhanging is to create a design that will incorporate a variety of both pieced and appliqued star patterns. I'm working on the premise that most of these blocks have a dark blue or black background.

If you didn't wish to use a solid colour, or you have blocks with more than one colour background, perhaps starting at the top with the darkest colour and moving to a lighter colour at the bottom would work.

The pattern itself is extremely simple using only squares and a couple of different sized triangles. A very effective pattern for beginners.



*Brought to
you by
Michelle of
Stella
Flammifera
Designs.*

Contact Details and Usage Informations

These patterns are free for non-commercial use. If you would like to reproduce them in a newsletter etc, please email me at:
laren@geocities.com.

If you would like to send me a squishy, any FQ's of 100% cotton fabrics will be gratefully accepted.

Michelle
PO BOX 129
Stockton NSW 2295
Australia

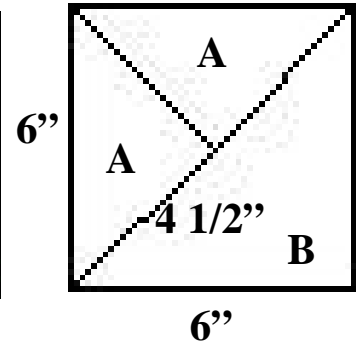
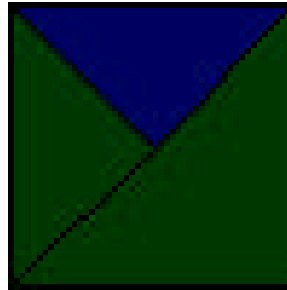


Michelle's Quilting Template #4

Templates

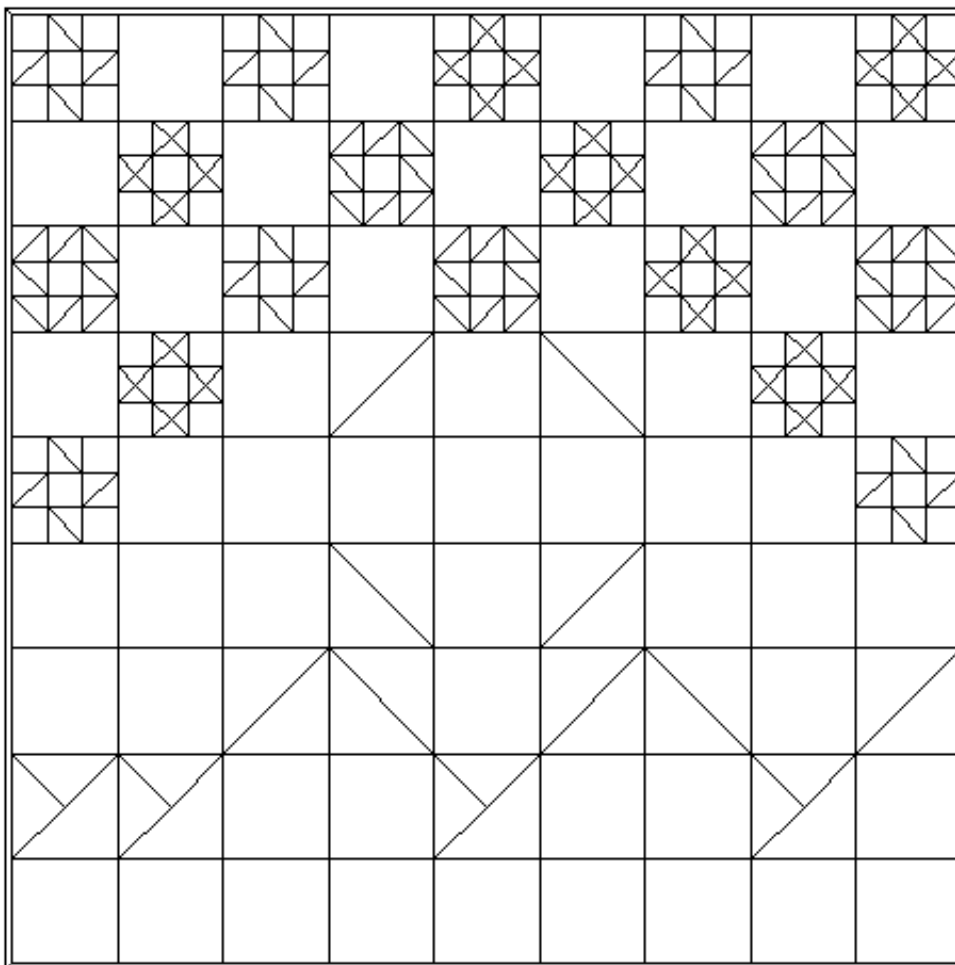
This pattern requires (in addition to the pre-made stars) only three additional templates:

1. 6" square
2. 6" half square triangle (B)
3. 4 1/2" half square triangle (A)



Rotary Cutting

This pattern would be a great project for practicing rotary cutting. The shapes to be cut are simple and there are plenty of them that need to be cut!!



Number of Pieces to Cut Per Block

The number of Blue 6" squares required depends on the number of 6" star blocks that are to be used.

Blue 6" half square triangles = 5
 Blue 4 1/2" half square triangles = 4

Green 6" square = 14
 Green 6" half square triangles = 9
 Green 4 1/2" half square triangles = 4

White 6" square = 4
 White 6" half square triangle = 4



Michelle's Quilting Template #4

Quilting Guide

